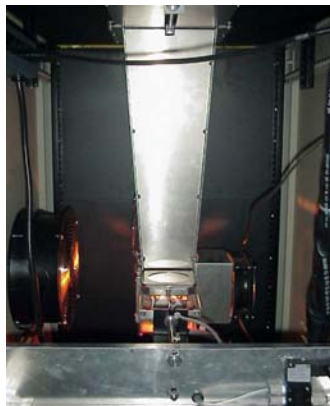
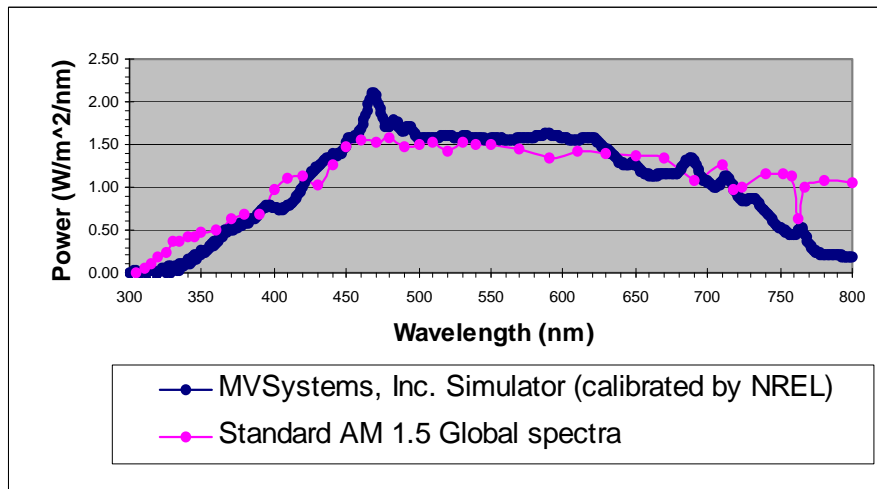
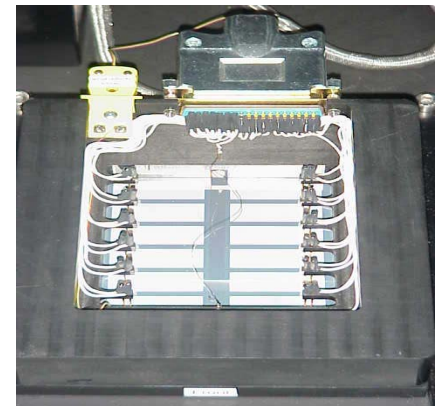


Automated I-V systems for solar cells and modules

- Up to 6 inch x 6 inch uniform illuminated area, using a Xe lamp
- Measures solar cell device or module (dark and light) parameters (Voc, Jsc, FF, Rs, Rsh, diode quality factor, reverse saturation current)
- Multiple device characterization capability
- Fully automated
- Excellent spectral accuracy with Global AM 1.5 as verified by NREL (National Renewable Energy Laboratory, Golden, Colorado)



Xe-Lamp Assembly



Substrate Fixture